



INSTRUCTION BULLETIN

No. 9010948
Machine: T12
Published: 04-2013
Rev. 00

NOTE: DO NOT DISCARD the Parts List from the Instruction Bulletin. Place the Parts List in the appropriate place in the machine manual for future reference. Retaining the Parts List will make it easier to reorder individual parts and will save the cost of ordering an entire kit.

NOTE: Numbers in parenthesis () are reference numbers for parts listed in Bill of Materials.

Installation instructions for **kit number 9009825**

SYNOPSIS:

This kit contains the parts needed to install a side brush kit onto T12 scrubbers.
Please follow step-by-step instructions.

SPECIAL TOOLS / CONSIDERATIONS: NONE

(Estimated time to complete: 7 - 8 hours)



PROTECT THE ENVIRONMENT

Please dispose of packaging materials, old machine components, and hazardous fluids in an environmentally safe manner according to local waste disposal regulations.

Always remember to recycle.

PREPARATION:

1. Completely drain the solution and recovery tanks.
2. Park the machine on a clean level surface, turn off the machine, and remove the key.

FOR SAFETY: Before leaving or servicing machine, stop on level surface, turn off machine, and remove key.

3. Disconnect the battery cable from the machine.



WARNING: Always disconnect battery cable from machine before working on electrical components.

INSTALLATION:

1. Remove the right stabilizer bar and right bumper assembly from the machine. Set the right side brush access door and mounting hardware aside. Discard all remaining items removed from the machine. (Fig. 1)

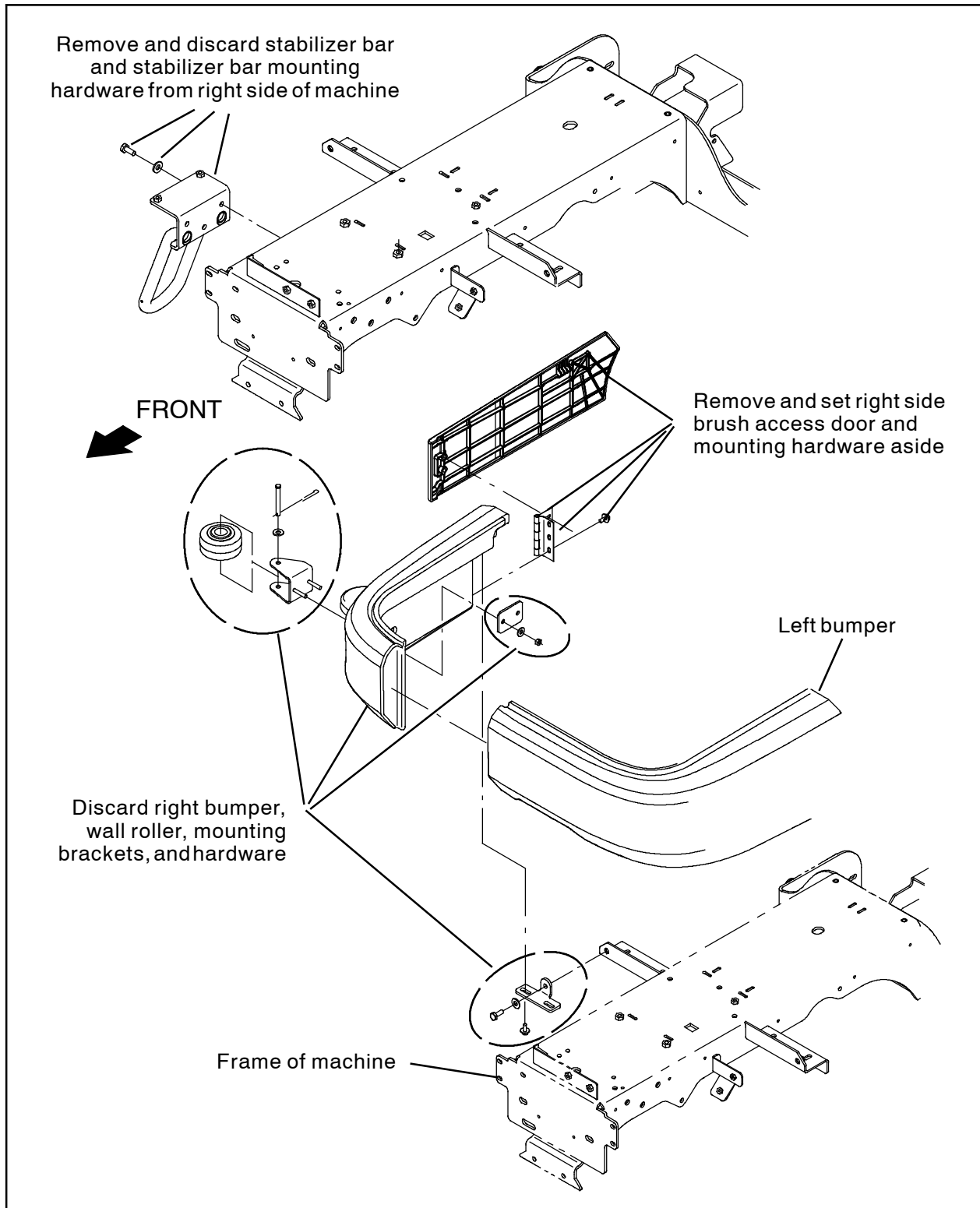


FIG. 1

2. Use one M10 hex screw (3), and one flat washer to install the side brush assembly mount bracket (1) onto the frame of the machine. (Fig. 2)
3. Use two M10 hex screws (8) and two flat washers (9) to install the anti-roll bracket (2) onto the side brush assembly mount bracket (1) and secure the side brush assembly mount bracket (1) to the frame of the machine. (Fig. 2)

4. Use one M12 hex screw (12) and one flat washer (13) to secure the anti-roll bracket (2) to the front of the frame of the machine. (Fig. 2)

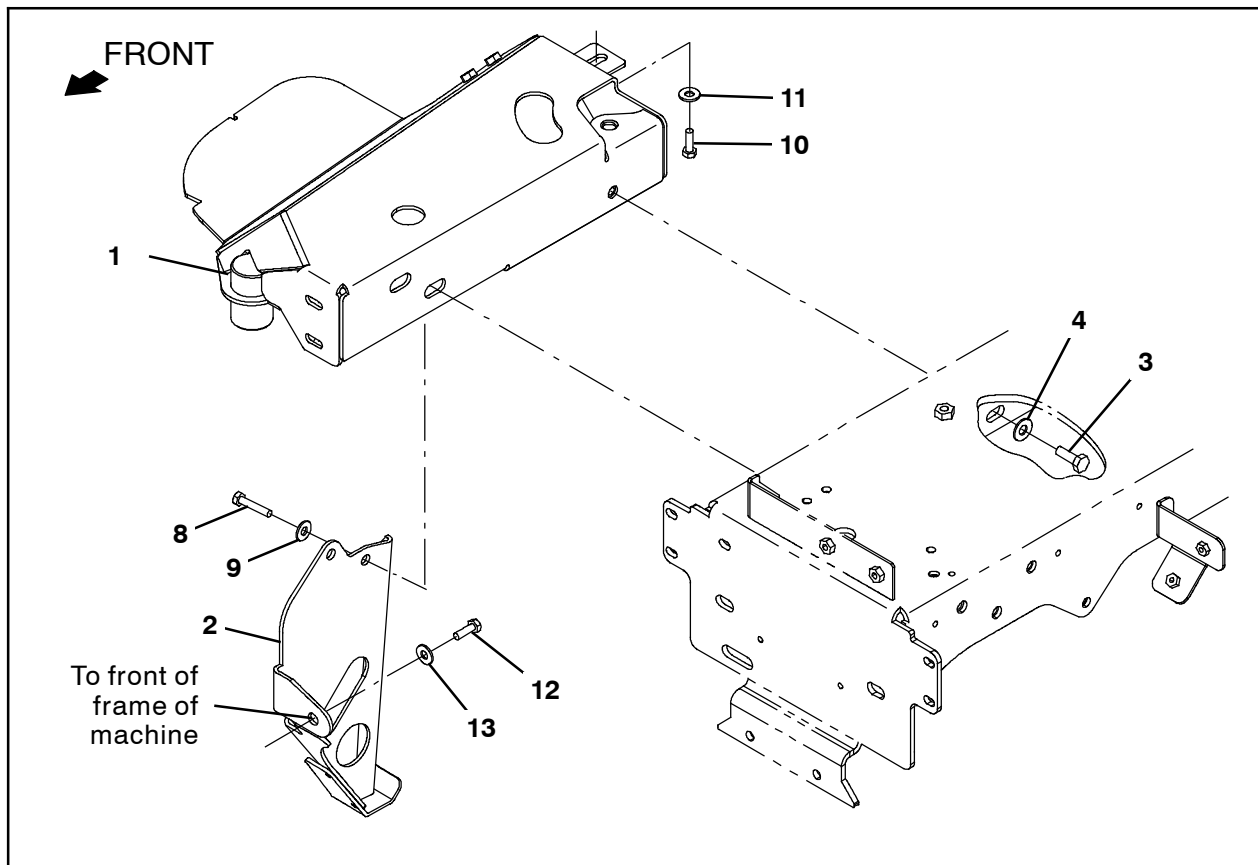


FIG. 2

1	1200370	Bracket Wldt, Mount, SBA	1
2	1202914	Bracket Wldt, Skid, Anti-Roll	1
3	12317	Screw, Hex, M10 X 1.50 X 30, SS	1
4	01686	Washer, Flat, 0.44b 1.00d .08, SS	1
8	09028	Screw, Hex, M10 X 1.50 X 25, SS	2
9	01686	Washer, Flat, 0.44b 1.00d .08, SS	2
10	09010	Screw, Hex, M8 X 1.25 X 25, SS	1
11	01685	Washer, Flat, 0.38b 0.88d .08, SS	1
12	12309	Screw, Hex, M12 X 1.75 X 30, SS	1
13	140045	Washer, Flat, 0.51b 1.25d .06, SS	1

5. Use a clevis pin (26), a flat washer (27), and a cotter pin (28) to install the actuator arm (29) onto the shaft of the side brush assembly actuator (24). (Fig. 3)
6. Insert two flange bushings (33) into the side brush assembly mount bracket. (Fig. 3)
7. Use a clevis pin (31), a flat washer (5), and a sleeve (30) to install the side brush assembly actuator (24) onto the side brush assembly mount bracket. (Fig. 3)
8. Use a clevis pin (25), a flat washer (27), and a cotter pin (28) to install the side brush assembly actuator (24) to the actuator bracket in the side brush assembly mount bracket. (Fig. 3)

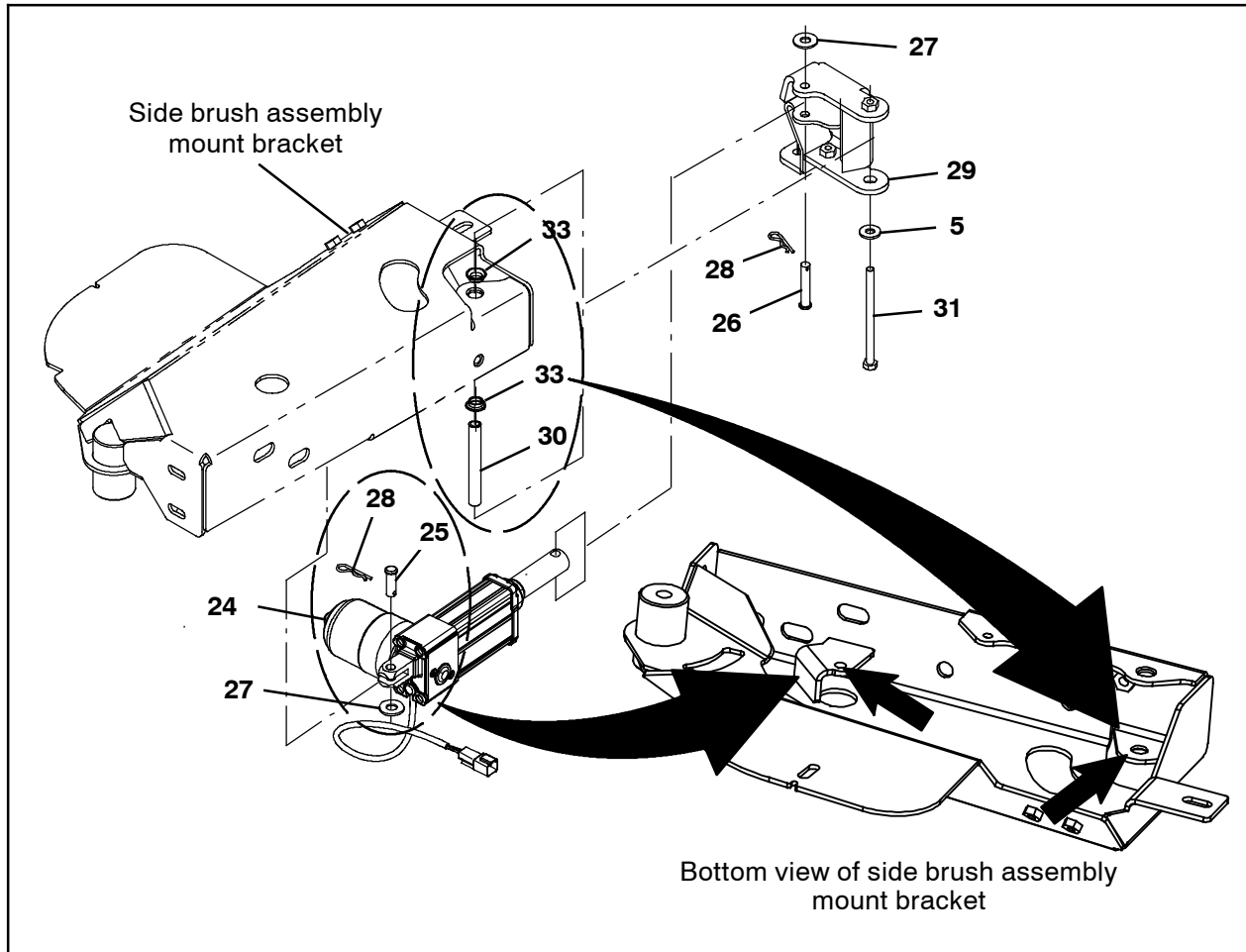


FIG. 3

	5	01685	Washer, Flat, 0.38b 0.88d .08, SS	5
▽	24	9010941	Actuator Kit, SBA, Afmkt [T12]	1
▲	25	86240	Pin, Clevis, 0.38d X 1.13l	1
▲	26	29584	Pin, Clevis, 0.37d X 2.00l	1
▲	27	01686	Washer, Flat, 0.44b 1.00d .08, SS	2
▲	28	44906	Pin, Cotter, Hair, 0.38d .093 Wir	2
	29	1201094	Arm Assy, Lift, Actuator	1
	30	1202694	Sleeve, 0.334b 0.494d 4.00l Stl PI	1
	31	49883	Screw, Hex, M8 X 1.25 X 120, 8.8, FI	1
	33	1054662	Bushing, Flng, 0.50b 0.59d 0.25l	2

9. Use one M12 hex screw (35), one flat washer (34), and a flange bushing (15) to install the side brush assembly pivot arm (13) to the side brush assembly mount bracket. (Fig. 4)

10. Use one M10 hex nut (21) and one flat washer (22) to install the spring assembly (19) onto the actuator arm installed in the side brush assembly mount bracket. (Fig. 4)

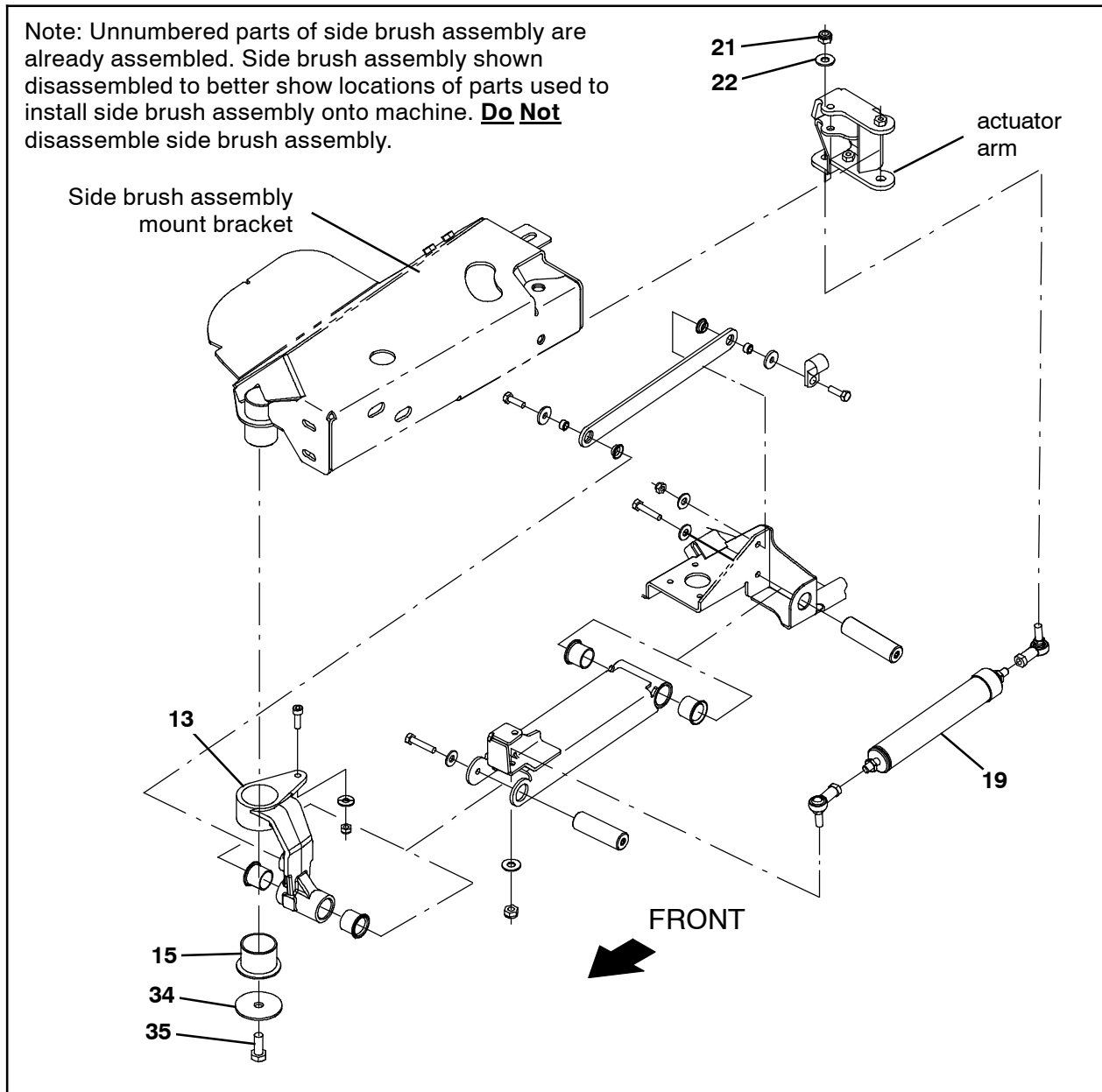


FIG. 4

▽	13	9011054	Pivot Arm Kit, SBA, Afmkt [T12]	1
▲	15	1201101	Bushing, Flng, 1.75b 1.94d 1.50l	1
▽	19	9010938	Spring Assy, Replmt, Afmkt [T12]	1
▲	20	05686	Rod-End, M10 X 1.5rh Fem M10 X 1.5stud	2
▲	21	08714	Nut, Hex, Lock, M10 X 1.5, NI, SS	2
▲	22	01686	Washer, Flat, 0.44b 1.00d .08, SS	2
	29	1201094	Arm Assy, Lift, Actuator	1
	34	1200634	Washer, Flat, 0.48b 2.50d .12, SS	1
	35	12309	Screw, Hex, M12 X 1.75 X 30, SS	1

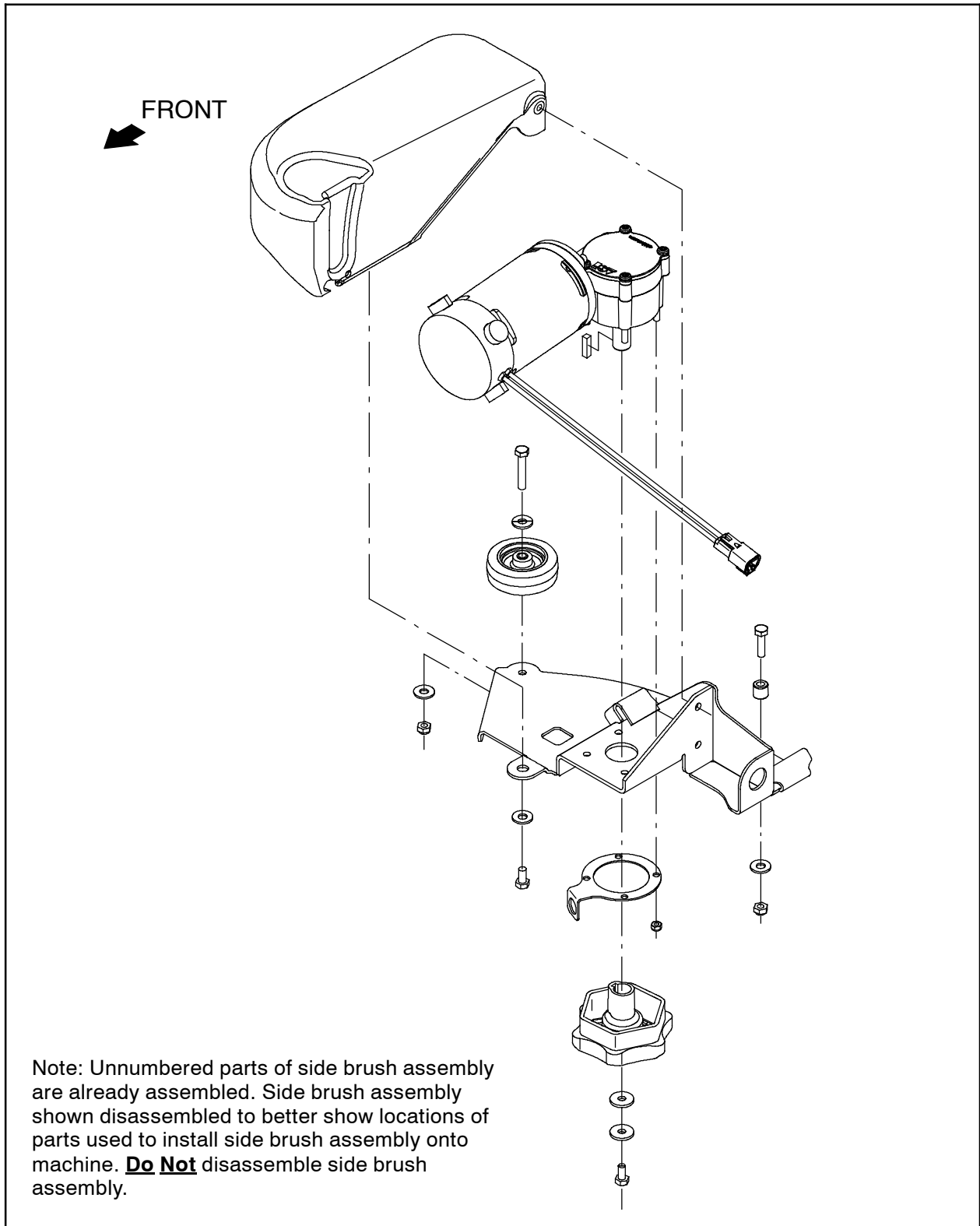


FIG. 5

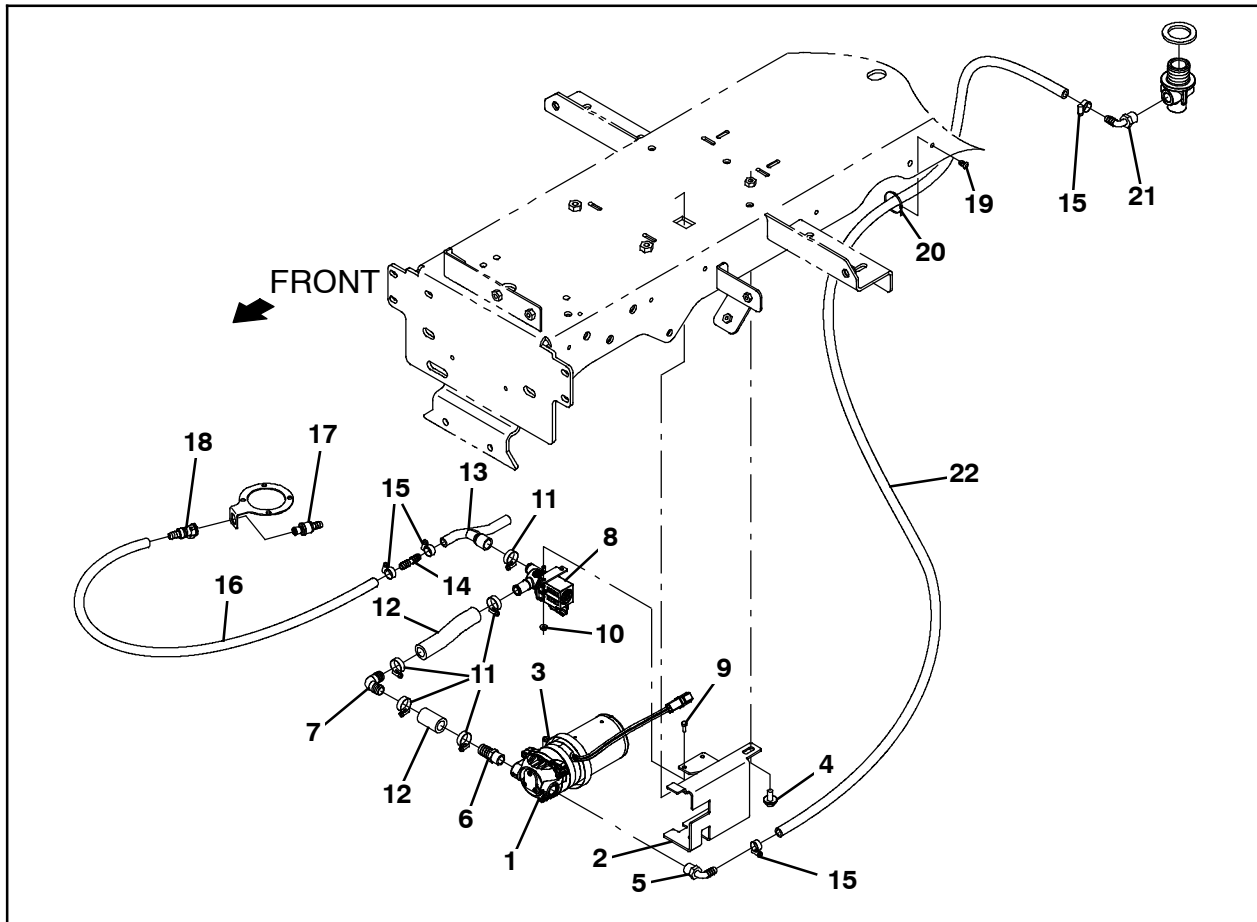


FIG. 6

11. Install plastic straight fitting (6) and a 90° plastic fitting (5) into the solution pump (1). (Fig. 6)
12. Use a hose clamp (3) to install the solution pump bracket (2) onto the solution pump (1). (Fig. 6)
13. Use two M5 hex screws (9) and two M5 flange hex nuts (10) to install the water solenoid valve (8) onto the solution pump bracket (2). (Fig. 6)
14. Use hose clamps (11) to connect the two 12" PVC hoses (12) to the 90° plastic fitting (7). (Fig. 6)
15. Use hose clamps (11) to connect the items assembled in the previous step to the water solenoid valve (8) and the plastic straight fitting (6) in the solution pump (1). (Fig. 7)
16. Install the plastic straight fitting (14) into the side brush solution manifold (13) and use a hose clamp (15) to secure the fitting inside the manifold. (Fig. 6)
17. Use a hose clamp (11) to install the side brush solution manifold (13) onto the water solenoid valve (8). (Fig. 6)
18. Use a hose clamp (15) to install the 36" PVC hose (16) onto the plastic straight fitting (14) in the side brush solution manifold (13). (Fig. 6)
19. Install the plastic straight fitting (18) into the 36" PVC hose (16). (Fig. 6)
20. Insert the solution pump bracket (2) tab into square hole in frame of machine and use one SEMS M8 hex screw (4) to secure the solution pump bracket / solution pump (1) onto the frame of the machine. (Fig. 6)

21. Remove filter screen located inside the solution tank from the solution fitting. (Fig. 7)

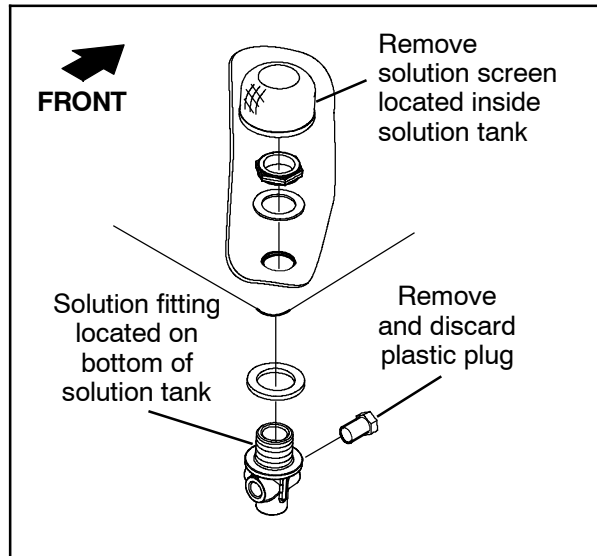


FIG. 7

22. Remove the solution fitting from the bottom of the solution tank. (Fig. 7)
23. Remove the plastic plug from the solution fitting. Discard the plastic plug. (Fig. 7)

24. Install the 90° plastic fitting (21) onto the solution fitting. (Fig. 6)
25. Reinstall the solution fitting onto the bottom of the solution tank. (Fig. 6 / Fig. 7)
26. Reinstall the filter screen into the solution tank. (Fig. 7)
27. Use a hose clamp (15) to connect the 96" PVC hose (22) to the 90° plastic fitting (21) on the solution fitting. (Fig. 6)
28. Route the 96" PVC hose (22) to the solution pump (1) and use a hose clamp (15) to connect the 96" PVC hose to the 90° plastic fitting (5) i the solution pump (1). (Fig. 6)
29. Route the 96" PVC hose (22) to the solution pump (1) and use a hose clamp (15) to connect the 96" PVC hose to the 90° plastic fitting (5) i the solution pump (1). (Fig. 6)

30. Route the 36" PVC hose (16) connected to the water solenoid valve (8) assembly to the side brush assembly and connect the 36" PVC hose to the plastic straight fitting (17) installed on the side brush assembly. (Fig. 6)

1	1200713	Pump, Soltn, 36vdc	1
2	1201313	Bracket, Pump	1
3	43555	Clamp, Hose, Wormdrive, 2.62-3.50d	1
4	1020341	Screw, Hex, M8 X 1.25 X 20, Ss, Sems	1
5	1005630	Fitting, Plstc, E90, Bm06/Pm06, Nyl	1
6	1013900	Fitting, Plstc, Str, Bm10/Pm06, Nyl	1
7	391365	Fitting, Plstc, E90, Bm10/Bm10	1
8	1054795	Valve, Water, Solenoid, 36vdc Bm12/Bm12	1
9	09738	Screw, Hex, M5 X 0.80 X 12, SS	2
10	07789	Nut, Hex, Flng, M5 X 0.80	2
11	54333	Clamp, Hose, Wormdrive, 0.31-0.88d, .31w	5
12	1015033	Hose, Afmkt, PVC, Brd, 0.62id, 01ft, Clr	1
13	1201336	Manifold, Soltn, SBA	1
14	20950	Fitting, Plstc, Str, Bm06/Bm06	1
15	43844	Clamp, Hose, Wormdrive, 0.25-0.62d, .31w	4
16	1006400	Hose, Afmkt, PVC, Brd, 0.38id, 03ft, Clr	2
17	1203438	Fitting, Plstc, Str, Bm06, Mplg, Male	1
18	1203454	Fitting, Plstc, Str, Bm06, Cplg, Fem	1
19	1071085	Clip, Tie, 0.25d, Plstc	2
20	130773	Tie, Cable, Nyl, 11.0l, .14w, 3.0 Max. D	2
21	1005630	Fitting, Plstc, E90, Bm06/Pm06, Nyl	1
22	1014976	Hose, Afmkt, PVC, Brd, 0.38id, 08ft, Clr	1

31. Remove the access panel from the steering channel. (Fig. 8)

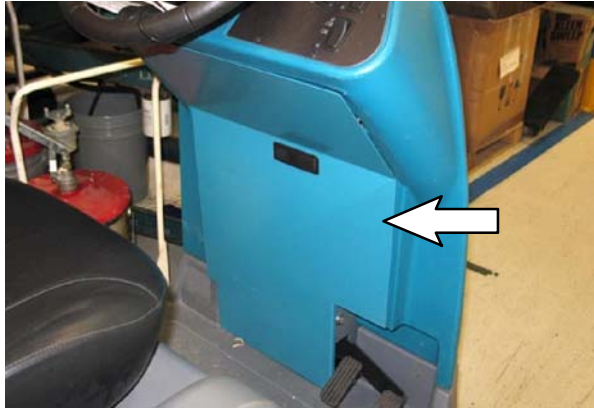


FIG. 8

32. Remove the M8 hex screw securing the bottom of the circuit breaker bracket to the machine. (Fig. 9)

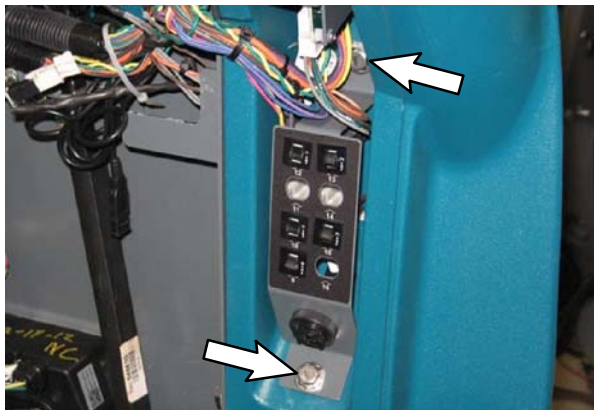


FIG. 9

33. Loosen the M8 hex screw securing the top of the circuit breaker bracket to the machine. (Fig. 9)
34. Pull circuit breaker bracket out far enough to access the main wire harness connector located behind the bracket. (Fig. 9)

35. Insert the 2.5-Amp circuit breaker (2) into location 10 in the circuit breaker bracket and the 20-Amp circuit breaker (3) into location 9 in the circuit breaker bracket. (Fig. 10 / Fig. 11)



FIG. 10

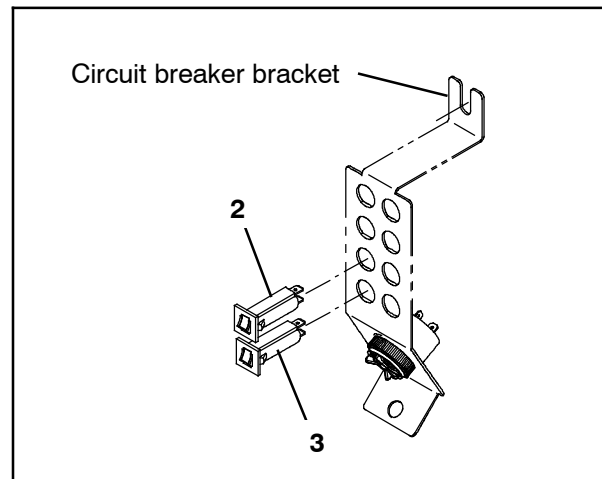


FIG. 11

36. Connect the side brush wire harness to the 2.5-Amp circuit breaker (2) and the 20-Amp circuit breaker (3). (Fig. 10 / Fig. 11 / Fig. 16)
37. Reinstall the M8 hex screw removed from the bottom of the circuit breaker bracket and tighten the M8 hex screw at the top of the circuit breaker bracket. (Fig. 9)

38. Use four pan screws XXXX (5) to install the four circuit board supports (6) onto the side brush circuit board bracket (13). (Fig. 12)

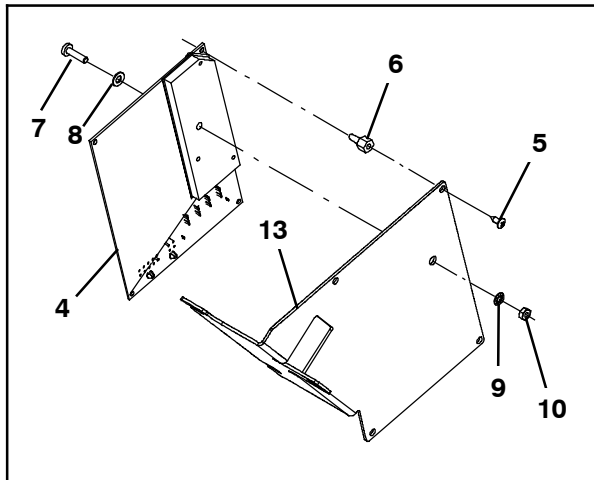


FIG. 12

39. Place the side brush circuit board (4) onto the four circuit board supports (6) and use one M4 pan screw (7), one nylon flat washer (8), one lock washer (9), and one M4 hex nut (10) to secure the circuit board to the side brush circuit board bracket (13). (Fig. 12)

40. Connect the side brush harness to the side brush circuit board (4). (Fig. 13 / Fig. 16)

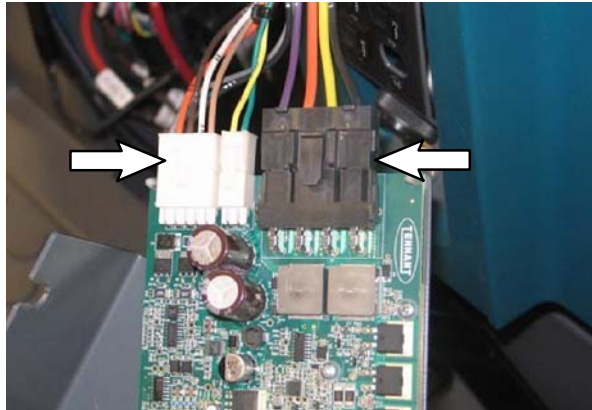


FIG. 13

41. Connect the main wire harness to the side brush circuit board (4). (Fig. 14 / Fig. 16)

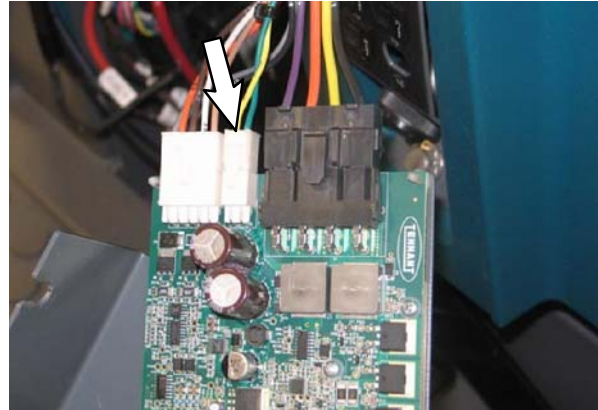


FIG. 14

42. **T12 XP:** Remove the hardware securing the right control panel to the machine. Set the hardware aside. (Fig. 15)

T12: Remove the hardware securing the left control panel to the machine. Set the hardware aside. (Fig. 15)

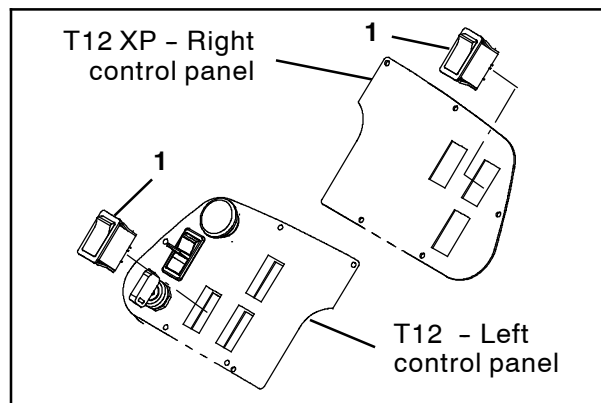


FIG. 15

43. **T12 XP:** Carefully lift the right control panel from the machine. Take care to not break any wire or cable connections. (Fig. 15)

T12: Carefully lift the left control panel from the machine. Take care to not break any wire or cable connections. (Fig. 15)

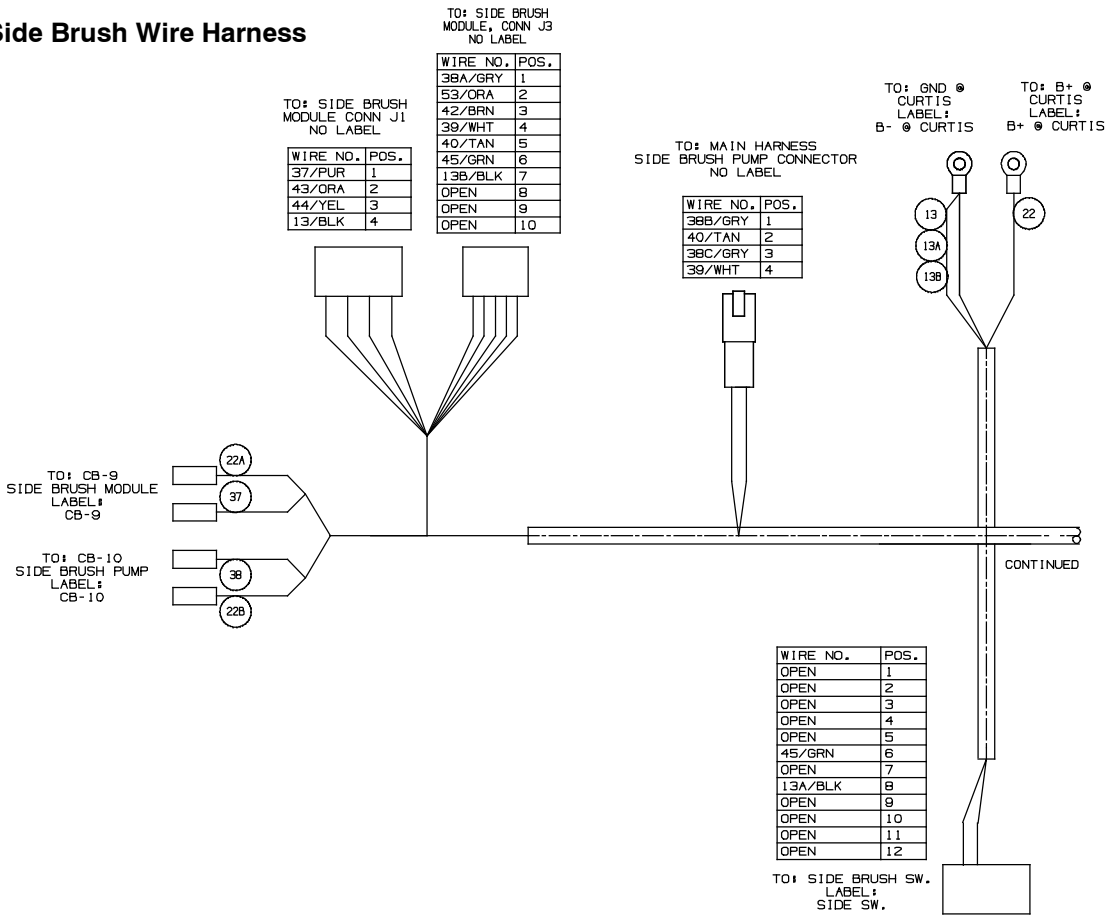
44. **T12 XP / T12:** Remove the blank from the space for the side brush switch. (Fig. 15)

45. **T12 XP / T12:** Install the rocker switch (1) into the control panel. (Fig. 15)

46. **T12 XP / T12:** Connect the side brush harness to the rocker switch (1). (Fig. 15 / Fig. 16)

47. **T12 XP / T12:** Reinstall the control panel onto the machine. (Fig. 15)

Side Brush Wire Harness



Main Wire Harness

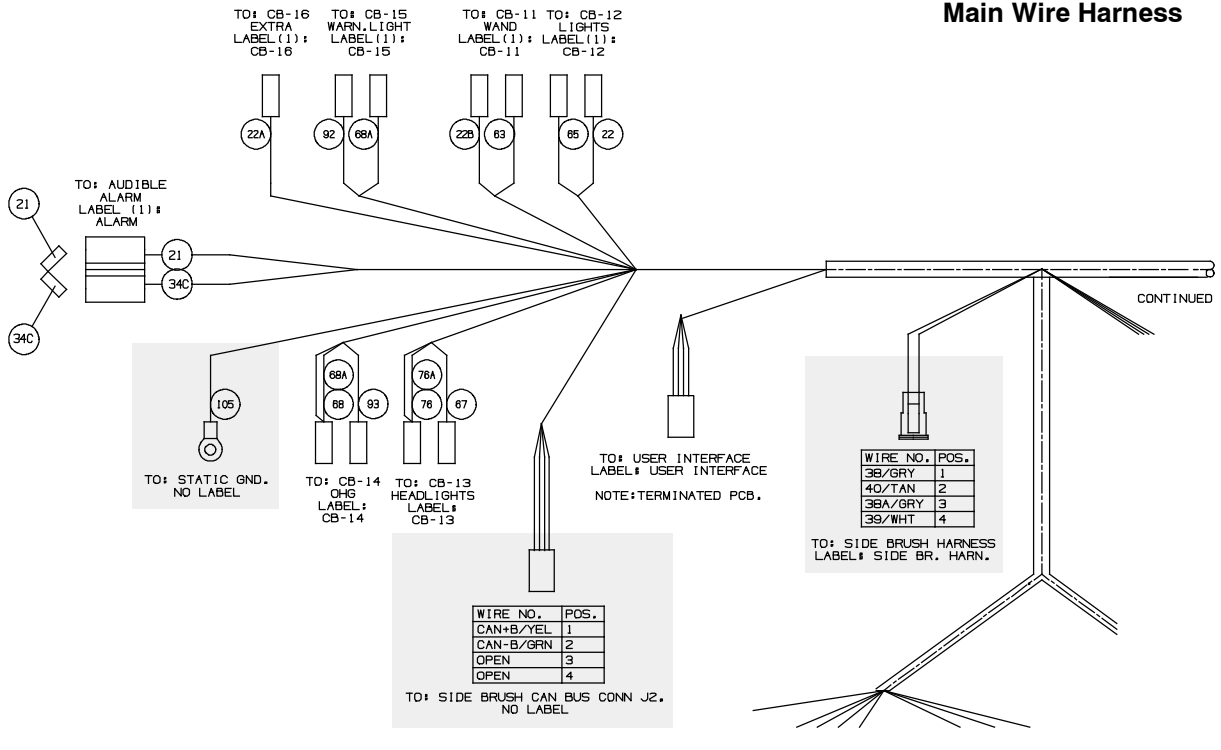


FIG. 16

48. Connect the the side brush harness to the main wire harness. (Fig. 17 / Fig. 16)



FIG. 17

49. Connect the side brush harness to the Curtis Controller. (Fig. 18 / Fig. 19 / Fig. 16)



FIG. 18

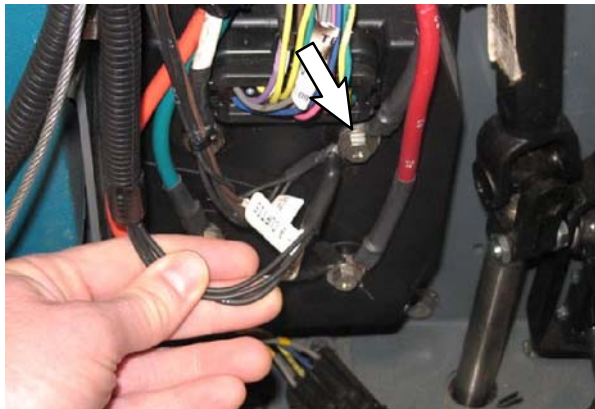


FIG. 19

50. Route the side brush harness along the main wire harness as shown and down into the hole in the side of the steering channel and into the area between the steering shroud and the steering channel. (Fig. 20 / Fig. 21 / Fig. 22)



FIG. 20

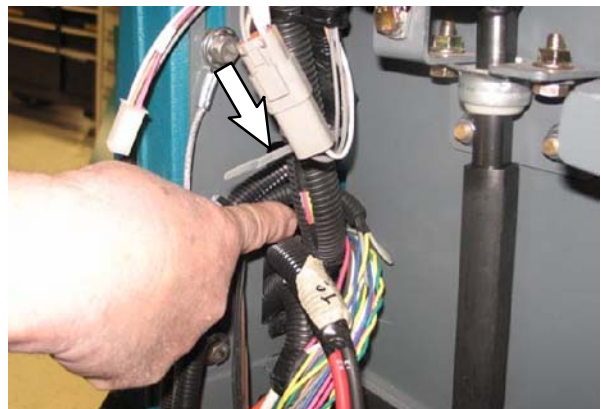


FIG. 21

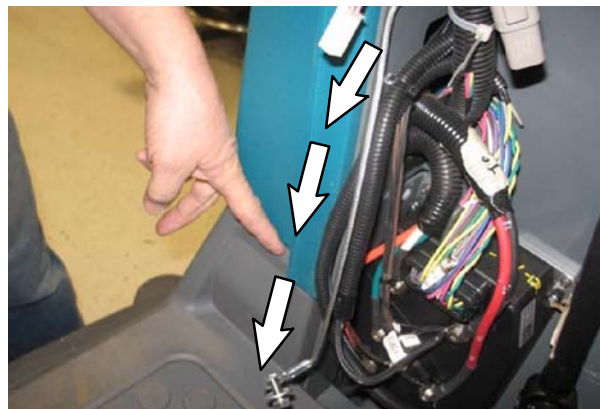


FIG. 22

51. Route the side brush harness down to the bottom of the frame of the machine and then across the front of the frame to the side brush assembly. (Fig. 23)



FIG. 23

52. Connect the side brush harness to the side brush motor and side brush actuator. (Fig. 26)
53. Connect the main wire harness to the e side brush motor and side brush actuator. (Fig. 26)
54. Use two M6 hex screws(11) and two flat washers (12) to install the side brush circuit board bracket (13) onto the steering shroud. (Fig. 24)

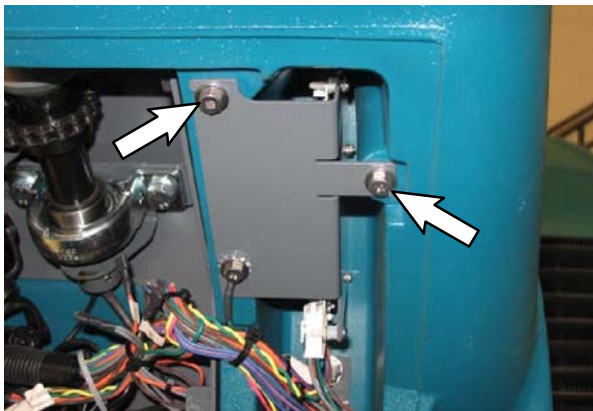


FIG. 24

55. Use one M6 hex screw (11), one flat washer (12), and one lock washer (14) to secure the main wire harness static ground wire to the side brush circuit board bracket (13) / steering shroud. (Fig. 25)

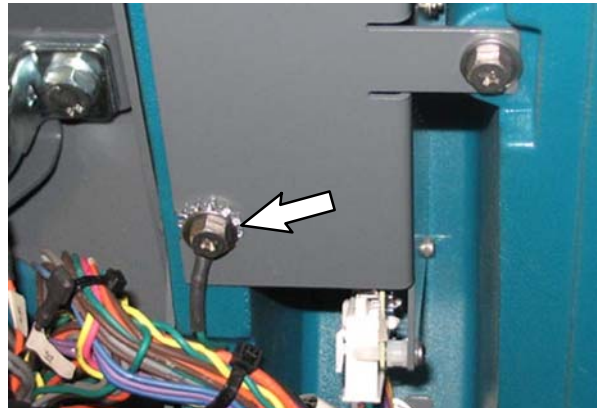
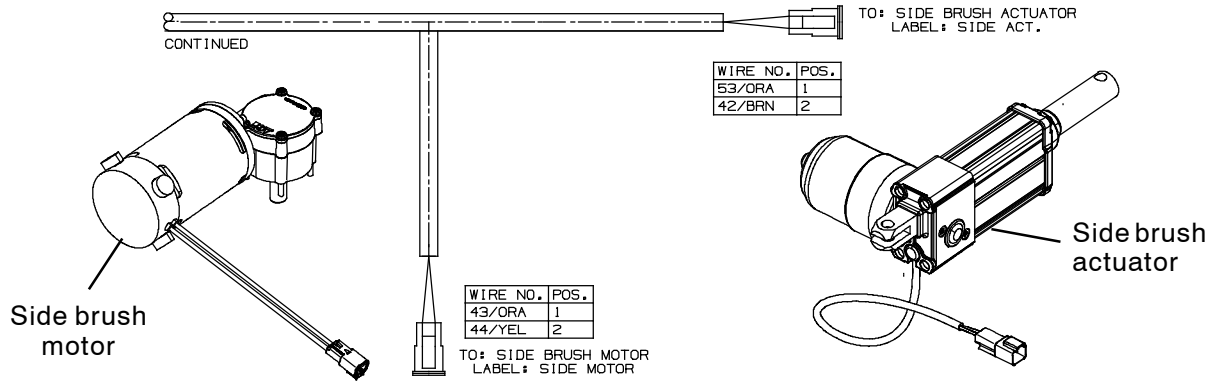


FIG. 25

Side Brush Wire Harness



Main Wire Harness

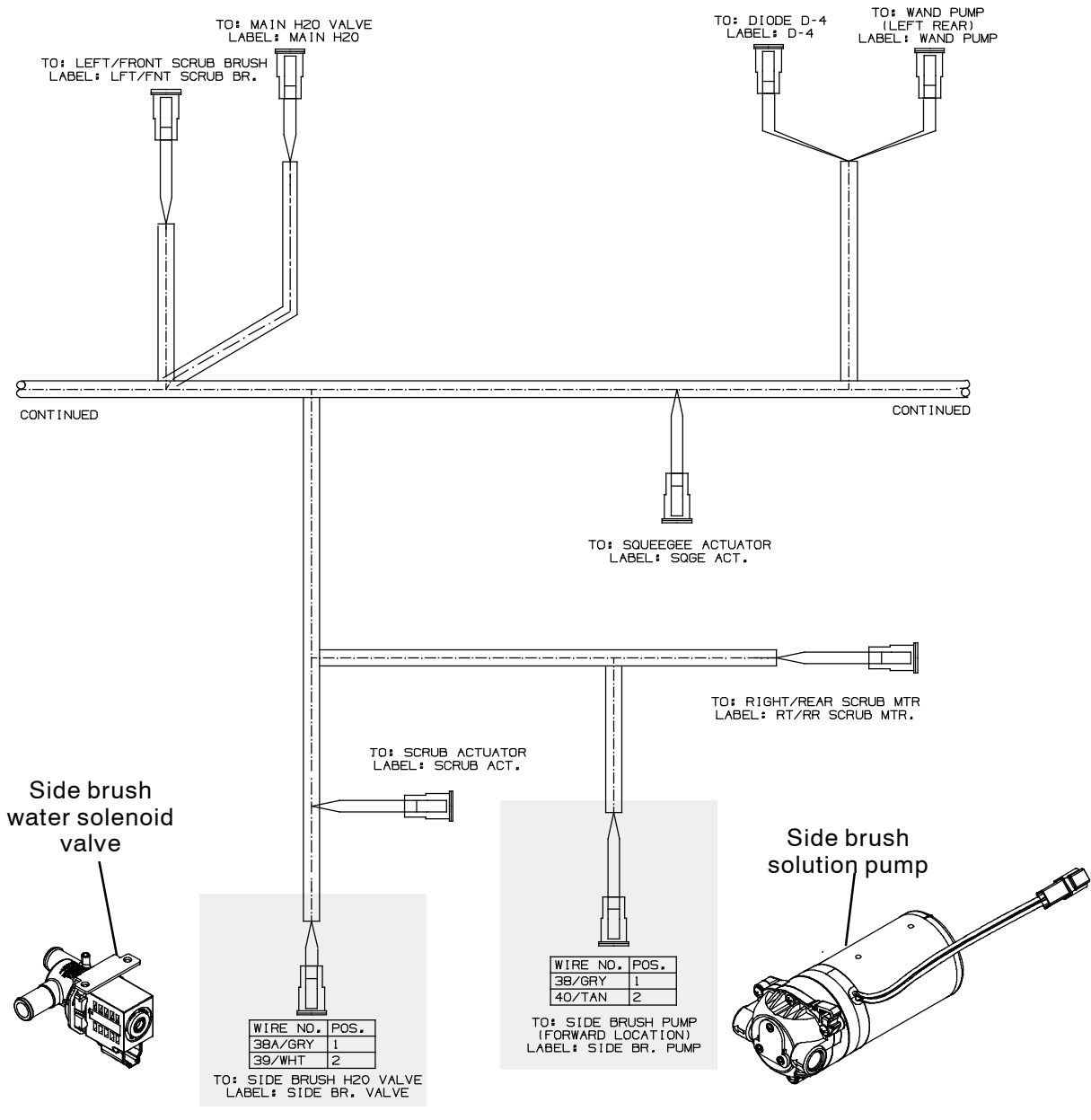


FIG. 26

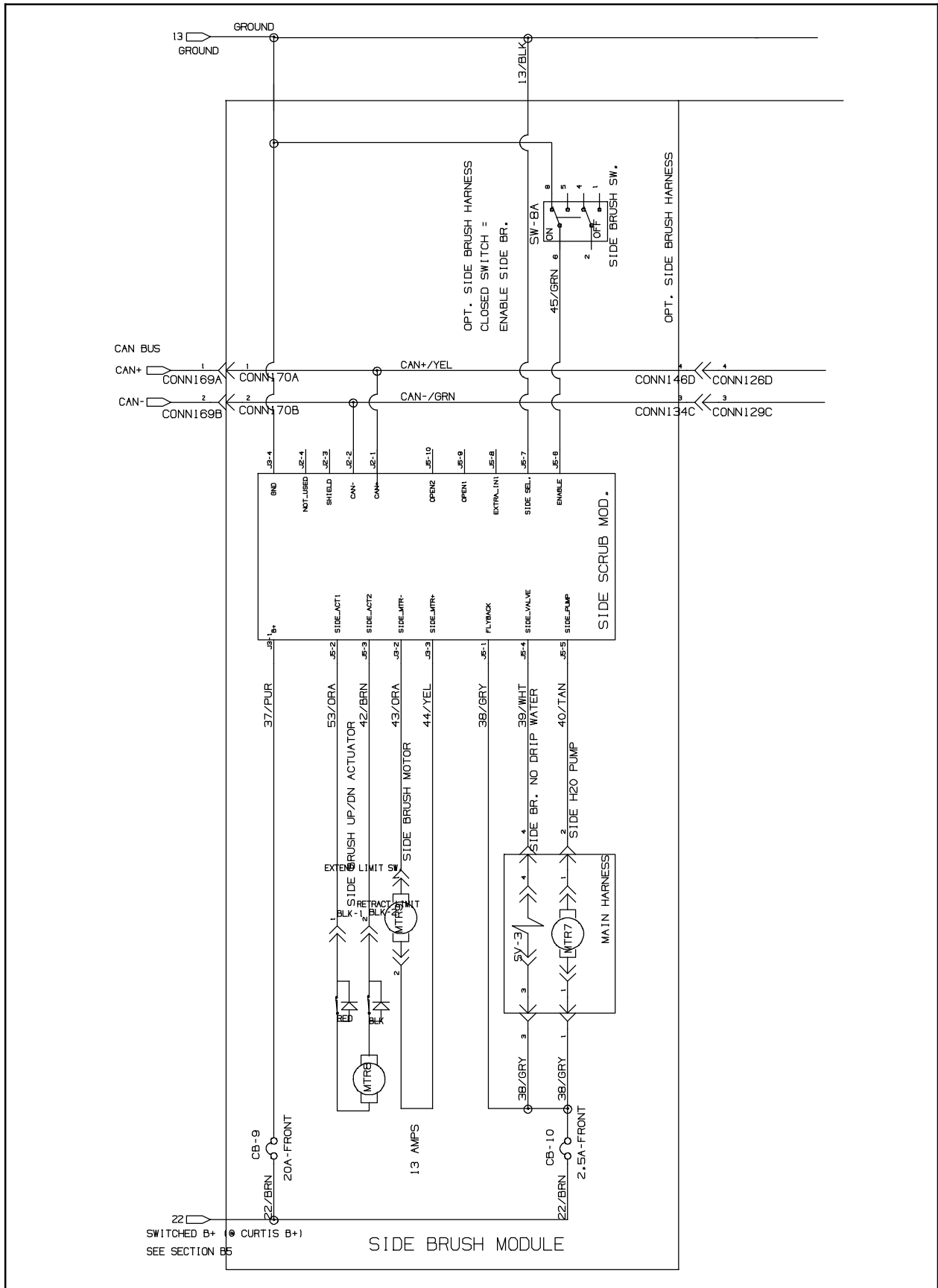


FIG. 27

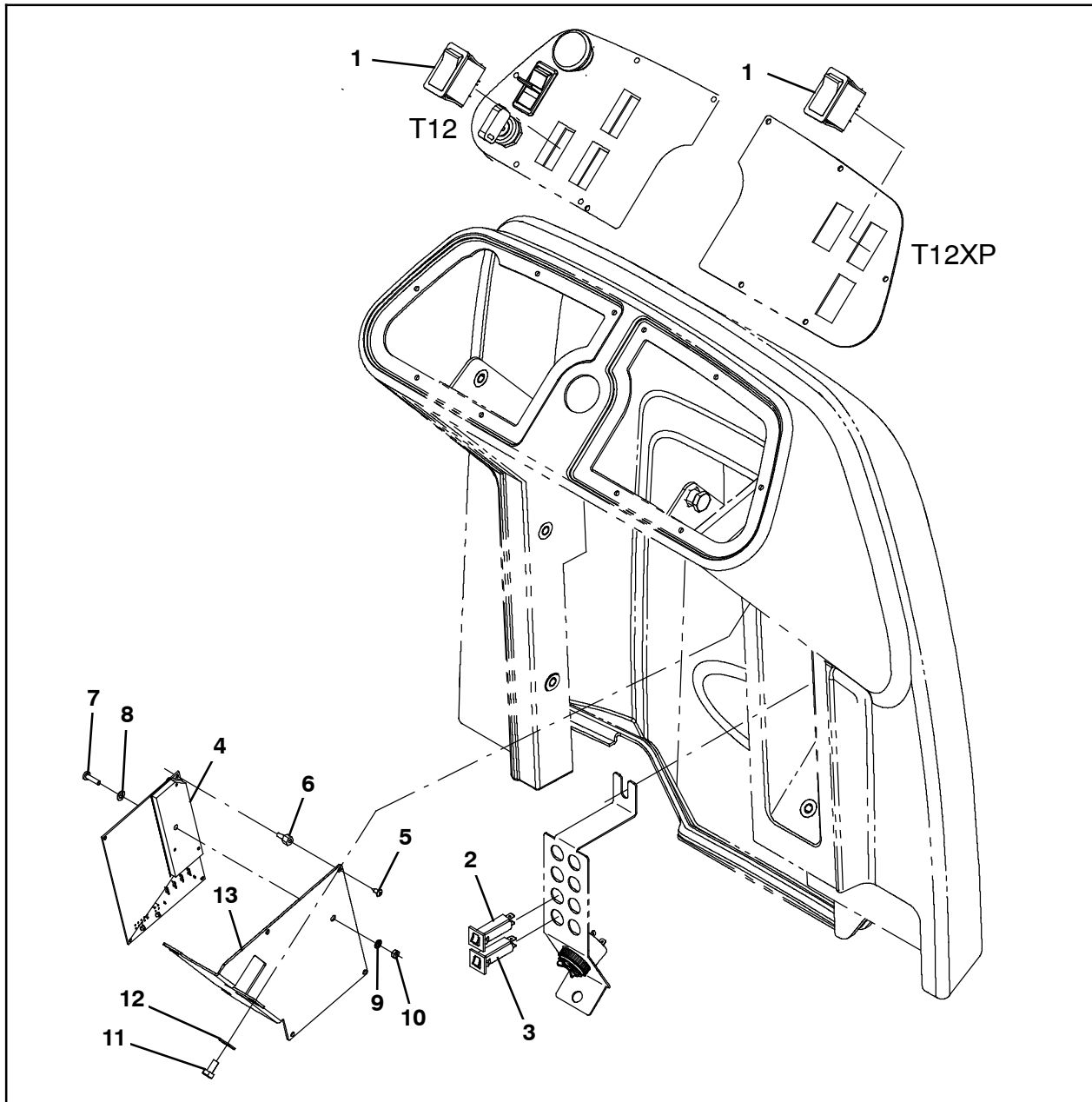


FIG. 28

1	397889	Switch, Rocker, Dpst, On / None / On	1
2	1064184	Circuit breaker, 02.5a, Resettable	1
3	1064189	Circuit breaker, 20.0a, Resettable	1
4	9010932	Circuit Board Kit, H2o_SBA Afmkt [T12]	1
5	37016	Pin, Grvd, 0.75d 01.90l, 1/0.59 [Btwn]	4
6	1016825	Support, Circuit board	4
7	24265	Screw, Pan, Phl, M4 X 0.70 X 16, SS	1
8	70246	Washer, Flat, 0.19b 0.38d .03, Nyl	1
9	32978	Washer, Lock, Int, 08	1
10	1049573	Nut, Hex, Jam, M4 X 0.70, SS	1
11	09744	Screw, Hex, M6 X 1.00 X 12, SS	3
12	01684	Washer, Flat, 0.27b 0.69d .05, SS	3
13	1201164	Bracket, Circuit Board, SBA	1
14	41140	Washer, Lock, Int-Ext, 0.25	1

56. Assemble the side brush squeegee assembly.
 Refer to Operator Manual for instructions how
 to install the squeegees onto the side brush
 assembly. (Fig. 29)

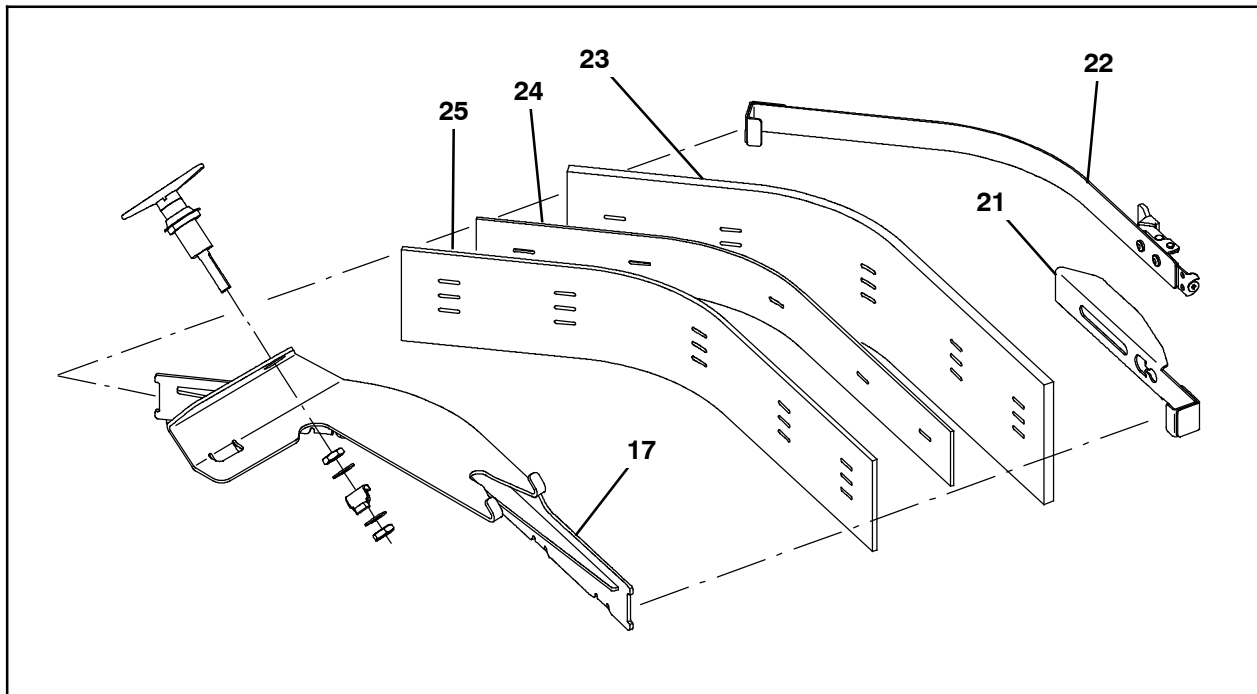


FIG. 29

17	1201327	Squeegee Wldt, Holder, SBA	1
22	1201610	Retainer Wldt, Sqge, SBA, With Latch	1
23	1201345	Blade, Sqge, SBA, Linatex	1
23	1204541	Blade, Sqge, SBA, Urethane (Option)	1
23	1204543	Blade, Sqge, SBA, Gum (Option)	1
24	1201344	Spacer, Blade	1
25	1201343	Blade, Sqge, SBA, Inner, Linard	1
25	1204540	Blade, Sqge, SBA, Inner, Urethane (Option)	1
25	1204542	Blade, Sqge, SBA, Inner, Gum (Option)	1

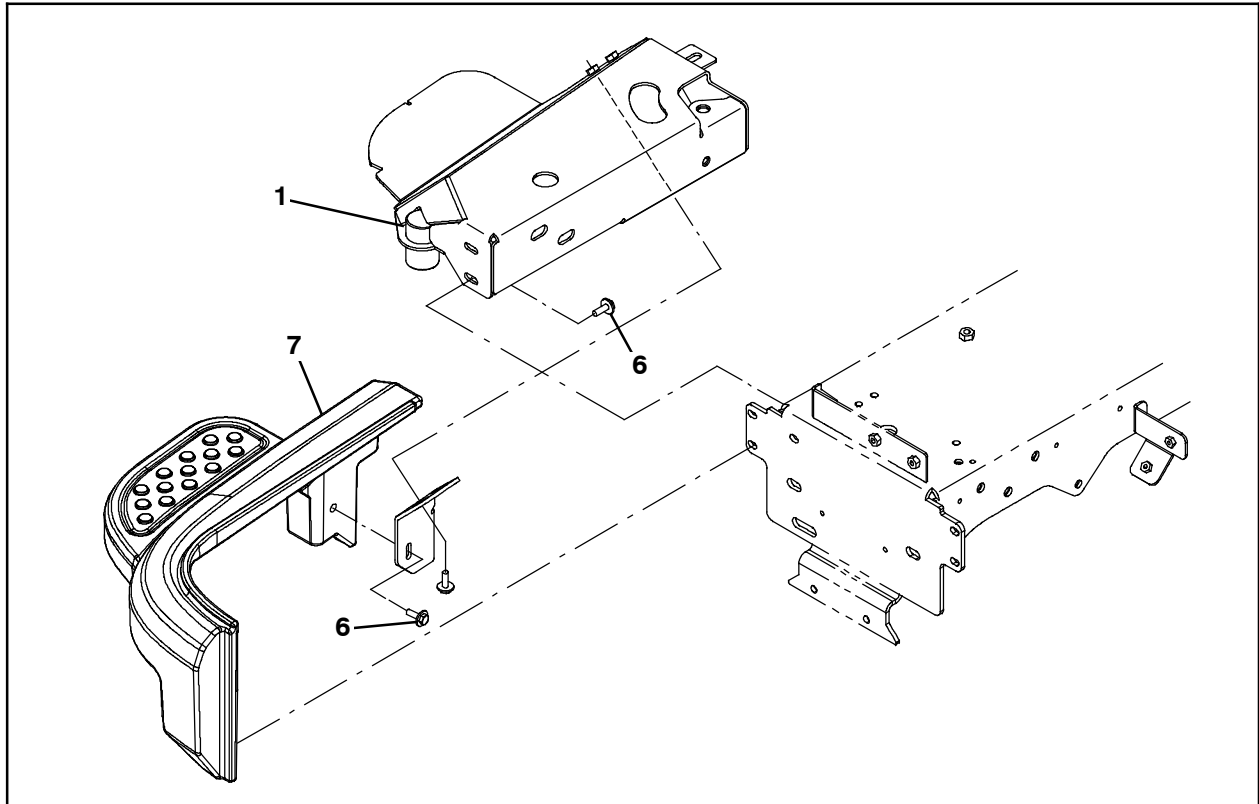


FIG. 30

- 57. Use three SEMS M8 hex screws (6) to install the side brush bumper (7) onto the machine. (Fig. 30)
- 58. Reinstall the right side brush access door onto the side brush bumper. (Fig. 31)

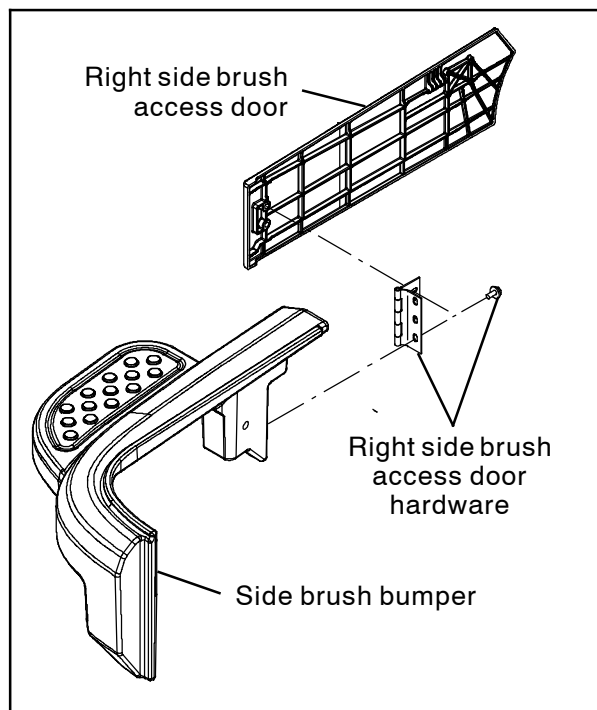


FIG. 31

- 59. Install the brush onto the side brush assembly. Refer to Operator Manual for instructions how to install side brush. (Fig. 32)
- 60. Ech-20 machines, install the side brush water valve, fittings and hoses . (Fig. 37)
- 61. Install the squeegee assembly onto the side brush assembly. Refer to Operator Manual for instructions how to install the side brush squeegee assembly. (Fig. 29)
- 62. Reconnect the battery cable to the machine.
- 63. Fill the solution tank. Refer to the Operator Manual for instructions how to fill the solution tank.
- 64. Start and test the machine. Operate the side brush to ensure it is functioning properly. Ensure brush is functioning and solution is being supplied to the brush for scrubbing. Refer to the Operator Manual for instructions how to operate the side brush.

NOTE: Reserved for any pending note that may be necessary.

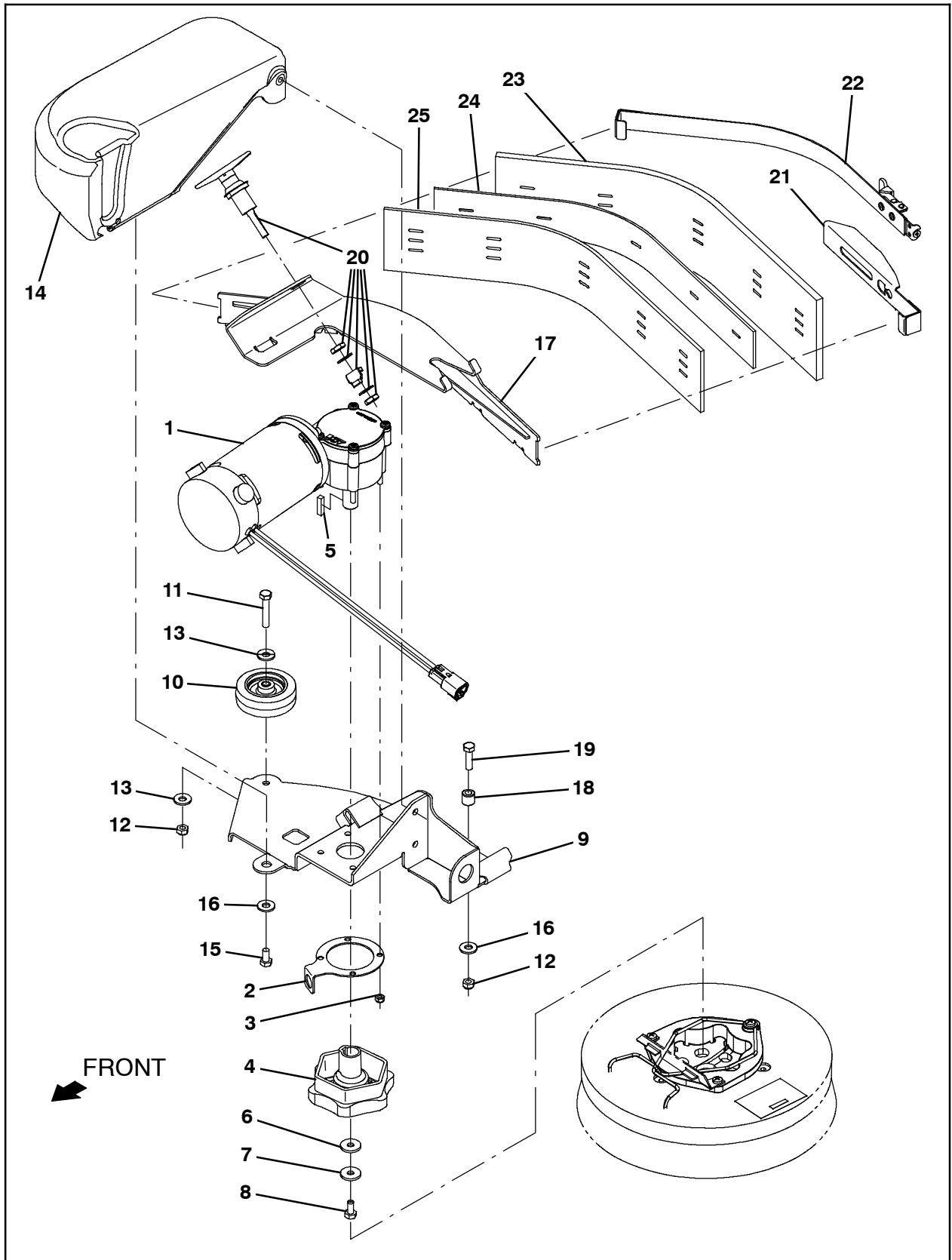


FIG. 32

	Ref.	Tennant Part No.	Description	Qty.
▽	1	1052754	Motor, Ele, 36vdc 0320rpm 0.63hp Gear	1
▲		9008737	Brush Kit, Motor, 1052754	1
	2	1203439	Plate, Sppt	1
	3	08712	Nut, Hex, Lock, M6 X 1.00, NI, SS	4
	4	377364	Hub, Drive, Brush, Disk, 0.75b [6t]	1
	5	00928	Key, Sq, 0.25 X 0.25, 1.00l	1
	6	1017218	Washer, Flat, 0.32b 1.00d .12, SS	1
	7	41186	Washer, Flat, Belleville, .31	1
	8	09740	Screw, Hex, M8 X 1.25 X 20, SS	1
	9	1200417	Plate Wldt, Deck, SBA	1
	10	1014918	Wheel, 03.0d 0.88w 0.31b, W/ Bshg, Rbr	1
	11	222505	Screw, Hex, M8 X 1.25 X 45, SS	1
	12	08713	Nut, Hex, Lock, M8 X 1.25, NI, SS	2
	13	01685	Washer, Flat, 0.38b 0.88d .08, SS	2
	14	9010929	Cover, Motor, SBA, Afmkt [T12]	1
	15	15675	Screw, Hex, M8 X 1.25 X 16, SS	1
	16	01685	Washer, Flat, 0.38b 0.88d .08, SS	2
	17	1201327	Squeegee Wldt, Holder, SBA	1
	18	80409	Sleeve, P/M, 0.34b 0.63d 0.6l, Bnz	1
	19	09011	Screw, Hex, M8 X 1.25 X 30, SS	1
	20	1201149	Latch, Compression, Sqge, SBA	1
	21	1201609	Retainer Wldt, Sqge, SBA	1
	22	1201610	Retainer Wldt, Sqge, SBA, With Latch	1
	23	1201345	Blade, Sqge, SBA, Linatex	1
	23	1204541	Blade, Sqge, SBA, Urethane (Option)	1
	23	1204543	Blade, Sqge, SBA, Gum (Option)	1
	24	1201344	Spacer, Blade	1
	25	1201343	Blade, Sqge, SBA, Inner, Linard	1
	25	1204540	Blade, Sqge, SBA, Inner, Urethane (Option)	1
	25	1204542	Blade, Sqge, SBA, Inner, Gum (Option)	1

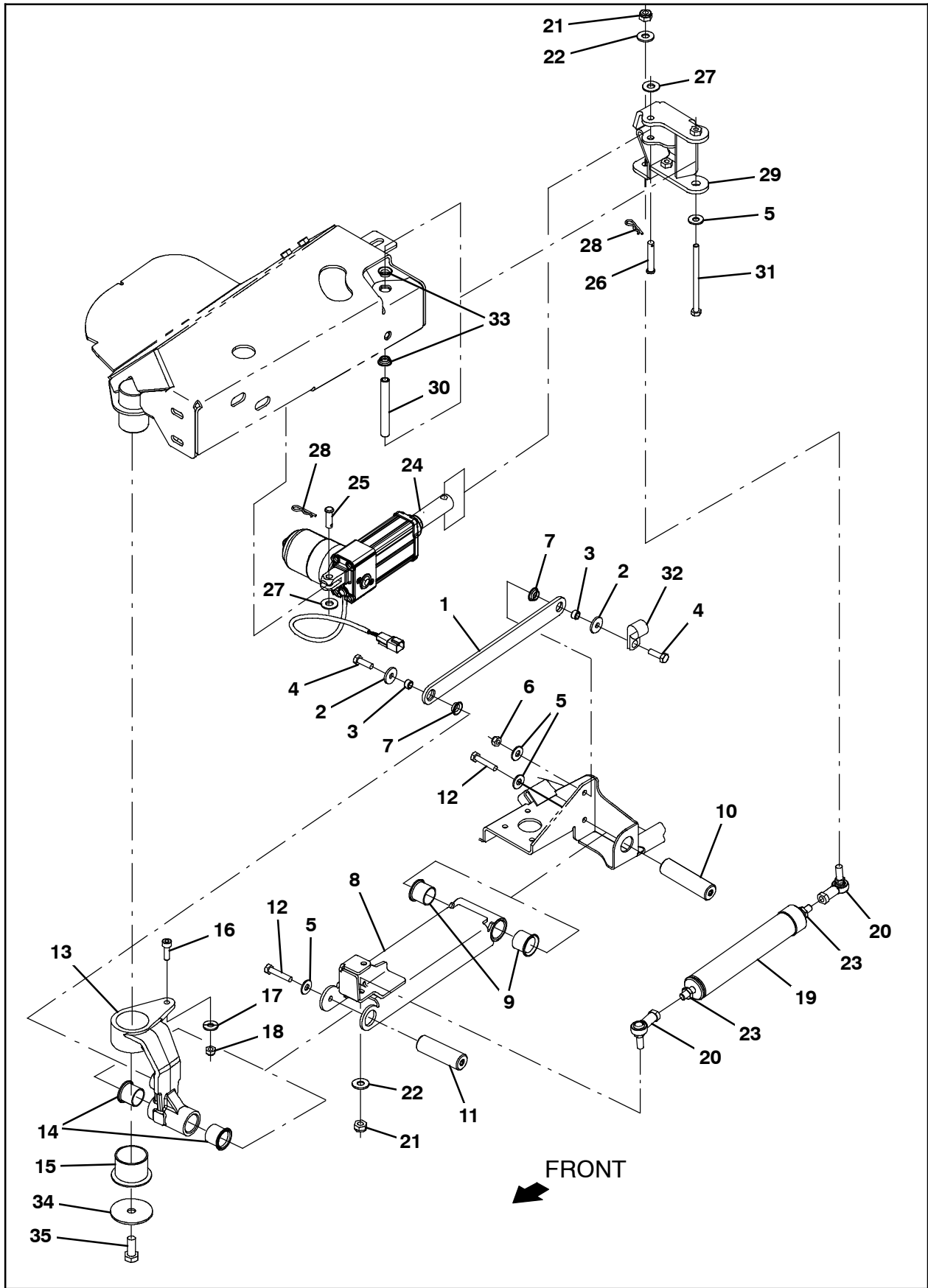


FIG. 33

	Tennant			
Ref.	Part No.	Description		Qty.
	1 1200939	Link, Upper		1
	2 1017218	Washer, Flat, 0.32b 1.00d .12, SS		2
	3 222516	Sleeve, P/M, 0.32b 0.50d 0.3l [430ss]		2
	4 09010	Screw, Hex, M8 X 1.25 X 25, SS		2
	5 01685	Washer, Flat, 0.38b 0.88d .08, SS		5
	6 08713	Nut, Hex, Lock, M8 X 1.25, NI, SS		1
	7 1054662	Bushing, Flng, 0.50b 0.59d 0.25l		2
▽	8 9011055	Lift channel Kit, SBA, Afmkt [T12]		1
▲	9 54618	Bushing, Flng, 1.00b 1.13d 1.00l		2
	10 1201137	Pin, Pivot, SBA		1
	11 1201575	Pin, Pivot, SBA		1
	12 09026	Screw, Hex, M8 X 1.25 X 40, SS		2
▽	13 9011054	Pivot Arm Kit, SBA, Afmkt [T12]		1
▲	14 54618	Bushing, Flng, 1.00b 1.13d 1.00l		2
▲	15 1201101	Bushing, Flng, 1.75b 1.94d 1.50l		1
▲	16 39308	Screw, Soc, M8 X 1.25 X 25, 12.9		1
▲	17 01685	Washer, Flat, 0.38b 0.88d .08, SS		1
▲	18 08713	Nut, Hex, Lock, M8 X 1.25, NI, SS		1
▽	19 9010938	Spring Assy, Replmt, Afmkt [T12]		1
▲	20 05686	Rod-End, M10 X 1.5rh Fem M10 X 1.5stud		2
▲	21 08714	Nut, Hex, Lock, M10 X 1.5, NI, SS		2
▲	22 01686	Washer, Flat, 0.44b 1.00d .08, SS		2
▲	23 763064	Nut, Hex, Jam, M10 X 1.5, [Din439]		2
▽	24 9010941	Actuator Kit, SBA, Afmkt [T12]		1
▲	25 86240	Pin, Clevis, 0.38d X 1.13l		1
▲	26 29584	Pin, Clevis, 0.37d X 2.00l		1
▲	27 01686	Washer, Flat, 0.44b 1.00d .08, SS		2
▲	28 44906	Pin, Cotter, Hair, 0.38d .093 Wir		2
	29 1201094	Arm Assy, Lift, Actuator		1
	30 1202694	Sleeve, 0.334b 0.494d 4.00l Stl PI		1
	31 49883	Screw, Hex, M8 X 1.25 X 120, 8.8, FI		1
	32 07471	Clamp, Cable, Stl, 0.75d X 0.75w, 1hole		1
	33 1054662	Bushing, Flng, 0.50b 0.59d 0.25l		2
	34 1200634	Washer, Flat, 0.48b 2.50d .12, SS		1
	35 12309	Screw, Hex, M12 X 1.75 X 30, SS		1

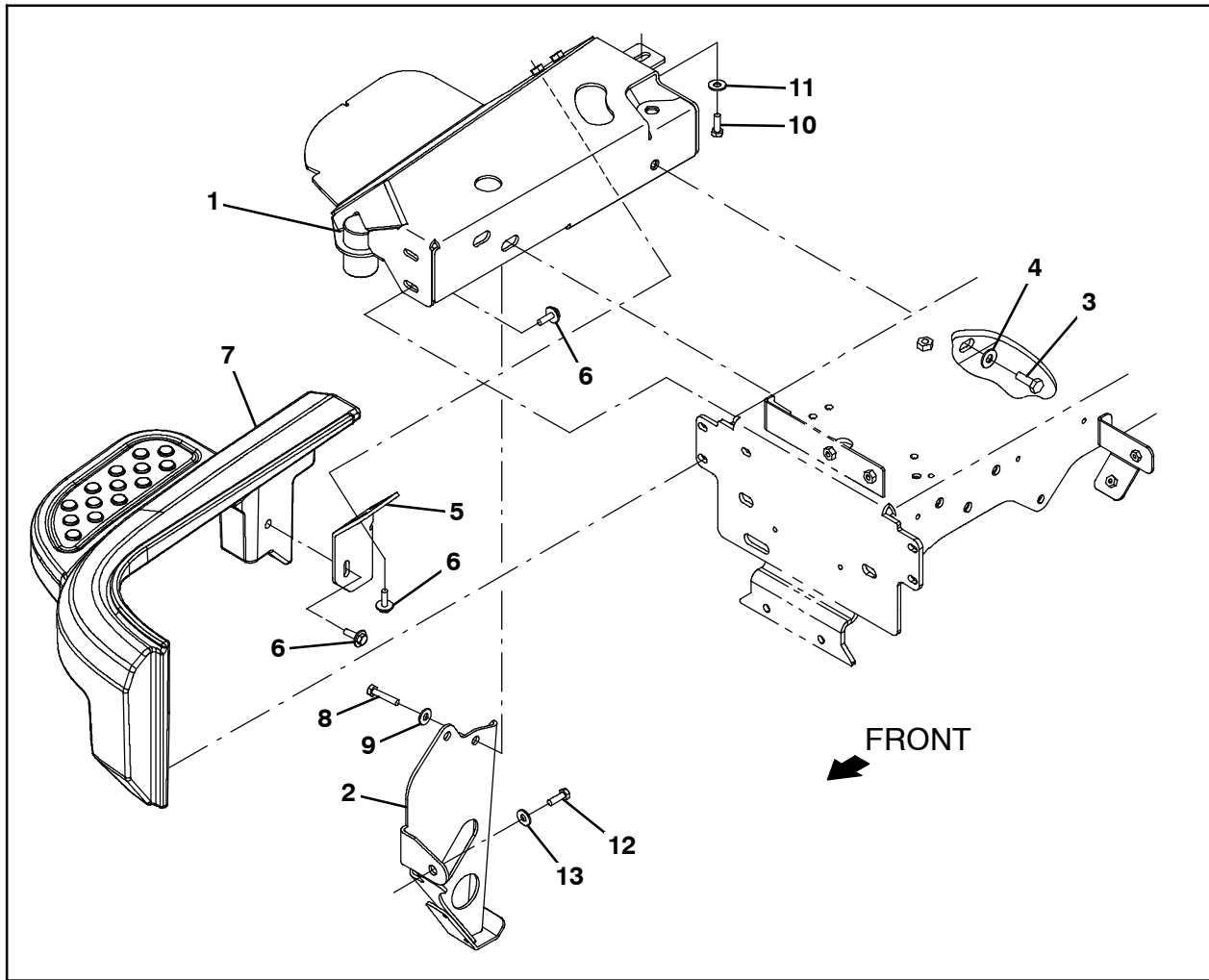


FIG. 34

Ref.	Tennant Part No.	Description	Qty.
1	1200370	Bracket Wldt, Mount, SBA	1
2	1202914	Bracket Wldt, Skid, Anti-Roll	1
3	12317	Screw, Hex, M10 X 1.50 X 30, SS	1
4	01686	Washer, Flat, 0.44b 1.00d .08, SS	1
5	1202521	Bracket, Sppt, Door	1
6	1020341	Screw, Hex, M8 X 1.25 X 20, SS, Sems	3
7	9010926	Bumper, SBA, Afmkt [T12]	1
8	09028	Screw, Hex, M10 X 1.50 X 25, SS	2
9	01686	Washer, Flat, 0.44b 1.00d .08, SS	2
10	09010	Screw, Hex, M8 X 1.25 X 25, SS	1
11	01685	Washer, Flat, 0.38b 0.88d .08, SS	1
12	12309	Screw, Hex, M12 X 1.75 X 30, SS	1
13	140045	Washer, Flat, 0.51b 1.25d .06, SS	1

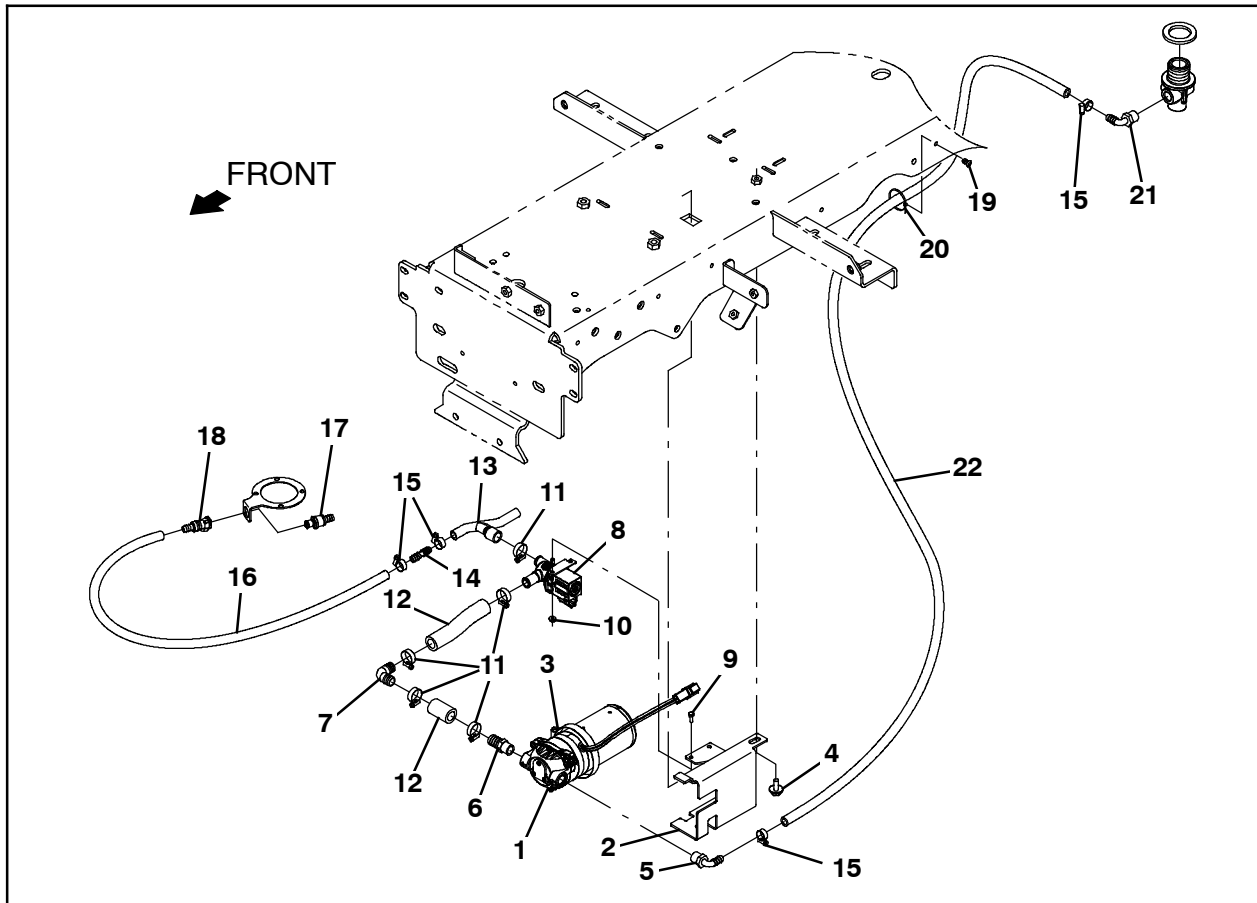


FIG. 35

Ref.	Tennant Part No.	Description	Qty.
1	1200713	Pump, Soltn, 36vdc	1
2	1201313	Bracket, Pump	1
3	43555	Clamp, Hose, Wormdrive, 2.62-3.50d	1
4	1020341	Screw, Hex, M8 X 1.25 X 20, Ss, Sems	1
5	1005630	Fitting, Plstc, E90, Bm06/Pm06, Nyl	1
6	1013900	Fitting, Plstc, Str, Bm10/Pm06, Nyl	1
7	391365	Fitting, Plstc, E90, Bm10/Bm10	1
8	1054795	Valve, Water, Solenoid, 36vdc Bm12/Bm12	1
9	09738	Screw, Hex, M5 X 0.80 X 12, SS	2
10	07789	Nut, Hex, Flng, M5 X 0.80	2
11	54333	Clamp, Hose, Wormdrive, 0.31-0.88d, .31w	5
12	1015033	Hose, Afmkt, Pvc, Brd, 0.62id, 01ft, Clr	1
13	1201336	Manifold, Soltn, SBA	1
14	20950	Fitting, Plstc, Str, Bm06/Bm06	1
15	43844	Clamp, Hose, Wormdrive, 0.25-0.62d, .31w	4
16	1006400	Hose, Afmkt, Pvc, Brd, 0.38id, 03ft, Clr	2
17	1203438	Fitting, Plstc, Str, Bm06, Mplg, Male	1
18	1203454	Fitting, Plstc, Str, Bm06, Cplg, Fem	1
19	1071085	Clip, Tie, 0.25d, Plstc	2
20	130773	Tie, Cable, Nyl, 11.0l, .14w, 3.0 Max. D	2
21	1005630	Fitting, Plstc, E90, Bm06/Pm06, Nyl	1
22	1014976	Hose, Afmkt, Pvc, Brd, 0.38id, 08ft, Clr	1

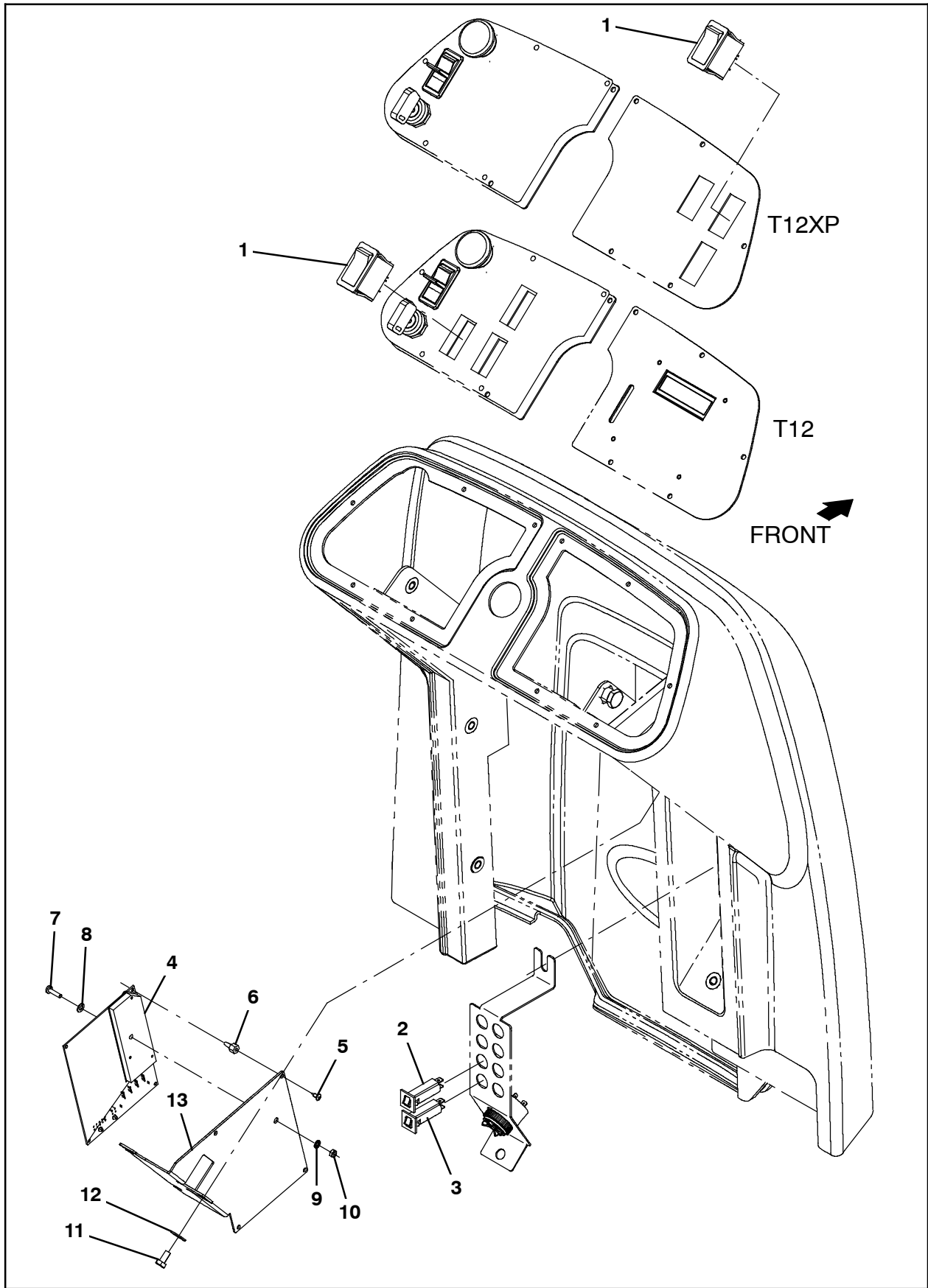


FIG. 36

Ref.	Tennant Part No.	Description	Qty.
1	397889	Switch, Rocker, Dpst, On / None / On	1
2	1064184	Circuit Breaker, 02.5a, Resettable	1
3	1064189	Circuit Breaker, 20.0a, Resettable	1
4	9010932	Circuit Board Kit, H2o_SBA, Afmkt [T12]	1
5	37016	Pin, Grvd, 0.75d 01.90l, 1/0.59 [Btwn]	4
6	1016825	Support, Circuit Board	4
7	24265	Screw, Pan, Phl, M4 X 0.70 X 16, SS	1
8	70246	Washer, Flat, 0.19b 0.38d .03, Nyl	1
9	32978	Washer, Lock, Int, 08	1
10	1049573	Nut, Hex, Jam, M4 X 0.70, SS	1
11	09744	Screw, Hex, M6 X 1.00 X 12, SS	3
12	01684	Washer, Flat, 0.27b 0.69d .05, SS	3
13	1201164	Bracket, Circuit Board, SBA	1
14	41140	Washer, Lock, Int-Ext, 0.25	1

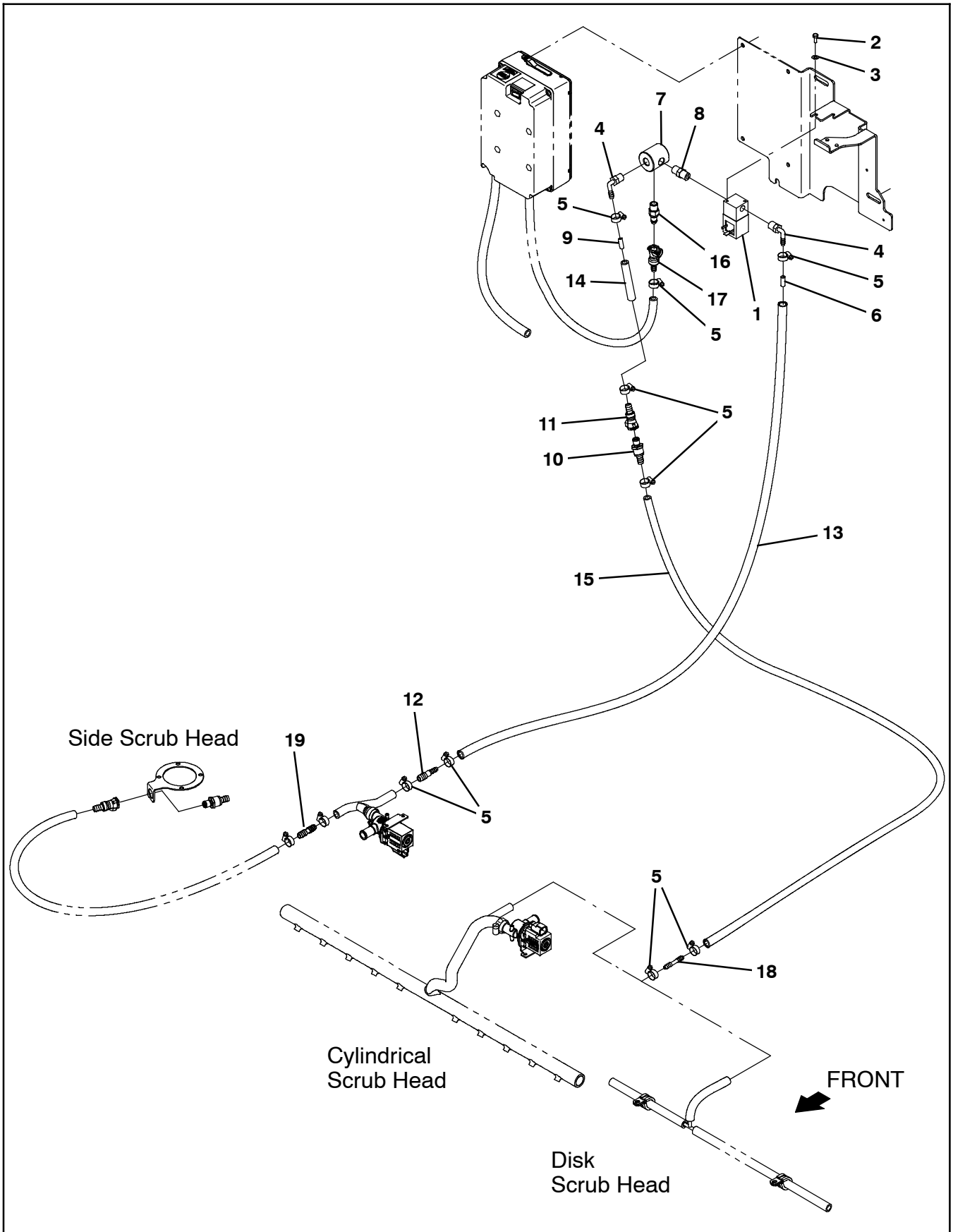


FIG. 37

Ref.	Tennant Part No.	Description	Qty.
1	1028581	Valve, Water, Solenoid, 36vdc 6.0mm Pf04	1
2	09738	Screw, Hex, M5 X 0.80 X 12, Ss	2
3	140011	Washer, Flat, 0.21b 0.45d .03, Ss	2
4	1011170	Fitting, Plstc, E90, Bm04/Pm04, Nyl	2
5	43844	Clamp, Hose, Wormdrive, 0.25-0.62d, .31w	9
6	1200467	Fitting, Plstc, Rst	1
7	1200998	Fitting, Plstc, Pf04/Pf04/Pf04	1
8	1052010	Fitting, Plstc, Str, Pm04/Pm04	1
9	1201441	Fitting, Plstc, Rst, Main Head	1
10	1204338	Fitting, Plstc, Str, Bm04, Cplg, Male	1
11	1002898	Fitting, Plstc, Str, Bm04, Cplg, Fem[Tco]	1
12	1039557	Fitting, Plstc, Str, Bm04/Bm06	1
13	1206796	Hose, Afmkt, Pvc, Brd, 0.25ld, 08Ft	1
14	1206776	Hose, Afmkt, Pvc, Brd, 0.25ld, 01Ft	1
15	1206779	Hose, Afmkt, Pvc, Brd, 0.25ld, 08Ft	1
16	1002899	Fitting, Plstc, Str, Pm04, Cplg, Mal[Tco]	1
17	1203996	Fitting, Plstc, Str, Bm05, Cplg, Fem	1
18	1052705	Fitting, Plstc, Str, Bm04/Bm04	1
19	20950	Fitting, Plstc, Str, Bm06/Bm06	1

TENNANT COMPANY
P. O. Box 1452
Minneapolis, MN 55440-1452